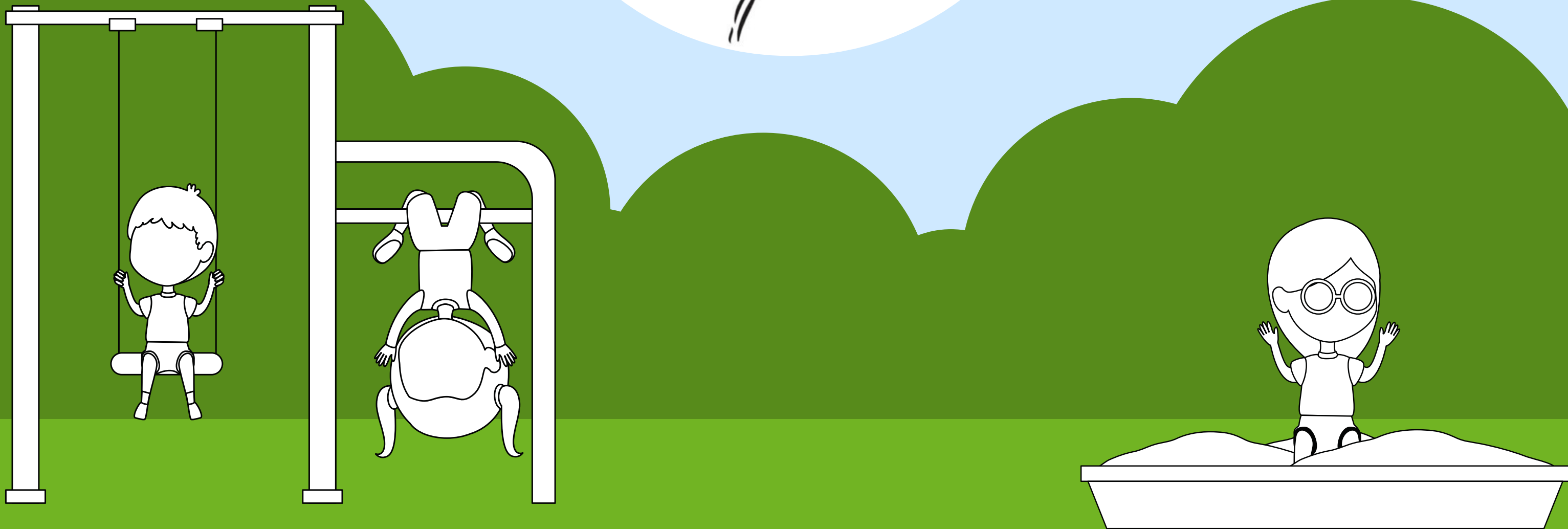




PARK LIFE



PARK LIFE HAS BEEN SET UP BY TWO WHITEHAWK RESIDENTS WITH YOUNG FAMILIES
EVIE MARTIN AND CAITLIN SMITH.

THE PROJECT IS CAMPAIGNING FOR BETTER OUTDOOR GREEN SPACES AND PLAY EQUIPMENT ALONG WITH
IMPROVED OPPORTUNITIES FOR LOCAL PEOPLE.

THEY WERE AWARDED 2 GRANTS OF £500 LAST YEAR FROM THE HEALTH FUND.

THE FIRST WAS TOWARDS THE COSTS OF THEIR ANNUAL "BIG PICNIC" EVENT, WHICH WAS HELD LAST
SUMMER. THE EVENT BROUGHT TOGETHER HUNDREDS OF LOCAL FAMILIES FOR A FUN AFTERNOON OF
ACTIVITIES PROMOTING THE NEED FOR OUTDOOR SPACE.

THE SECOND GRANT WAS GIVEN TOWARDS PARK LIFE'S ONGOING PROJECT MANAGEMENT,
LOBBYING AND CAMPAIGNING COSTS.

THEY HAVE BEEN SUCCESSFUL IN GETTING 160K SET ASIDE TO IMPROVE PARK PLAY EQUIPMENT IN MIDDLE
PARK NEAR ST CUTHMANS CHURCH WHITEHAWK, HOPEFULLY BEING BUILT IN 2020!



info@bhpparklife.co.uk
www.facebook.com/BHParkLife

